



Solenoid valve 2/2 way N.C. **Direct acting** **Explosion proof - EEx m II T 4**

21L1QDV25

÷

21L1QDV40

PRESENTATION:

Direct acting S.V. for interception of fluids compatible with the construction materials.

Minimum operational pressure is not required.

The materials used and the tests carried out ensure maximum reliability and duration.

USE: Potentially explosive atmospheres

PIPE: G 1/8

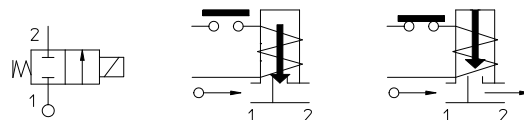
COILS: Series TNA - Ø 14,5
 (For characteristic see catalogue page)

Max. allowable pressure (PS) 40 bar
 Environment temperature - 20°C + 50°C
 Temperature max. medium + 80°C



Gaskets	Temperature		Medium
V=FKM (fluoroelastomer)	- 10°C	+ 80°C	Mineral oils (2°E), gasoline gas oil, fuel oils (7°E)
F=H-NBR	- 20°C	+ 80°C	Air, inert gas, water R 134a, R 404a

For seals other than FKM replace the letter "V" with the ones corresponding to the other seals. E.I. 21L1QDF25..



Pipe ISO 228/1	Code	Max viscosity		Ø mm	Kv l/mn	Power (watt)	Pressure		
		cSt	°E				min bar	M.O.P.D.	
G 1/8	21L1QDV25	53	~ 7	2,5	3,2	(See TNA coils catalogue page)	0	14	9
	21L1QDV30			3	4			10	6
	21L1QDV40			4	5			6	1,7

(ATEX/ITA/08/011
 According to Directive 94/9/CE ATEX)

SPECIAL ITEM-NOT STANDARD

Note

Available on request and with minimum quantities.

The "ODE" reserves the right to carry out technical and aesthetic modifications without prior notification.

MATERIALS:

Body	Stainless steel AISI 316
Armature tube	Stainless steel AISI series 300
Fixed core	Stainless steel AISI series 400
Plunger	Stainless steel AISI series 400
Phase displacement ring	Gold plated copper
Spring	Stainless steel AISI series 300
Seal	Standard: V=FKM On request: F=H-NBR
Orifice	Stainless steel AISI 316

FEATURES:

Protection degree	IP 65 EN 60529 (DIN 40050)
-------------------	----------------------------

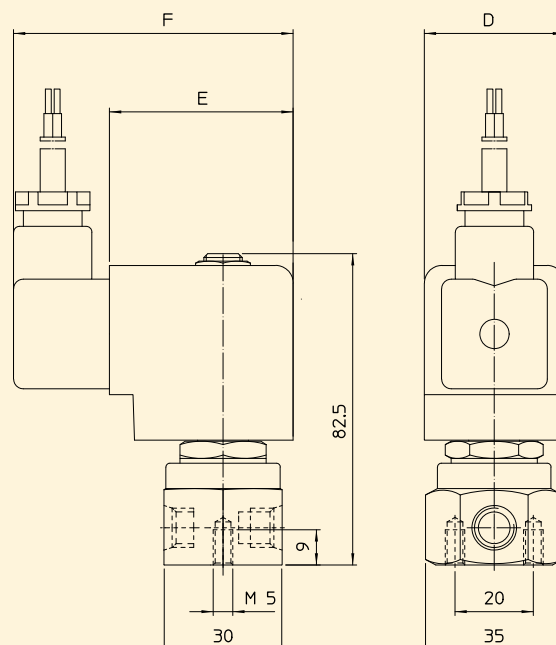
SPARE PARTS:

KIT:

These articles cannot be supplied
as spare part according to Directive 94/9/CE ATEX

DIMENSIONS:

SPECIAL ITEM-NOT STANDARD



TYPE	DIMENSION		
	D mm	E mm	F mm
T	36	47	71,4